



Multi-Solvent Dry Cleaning Machine Specifications

TECHNICAL DATA

UNISEC JUNIOR	Unit	40LBS	50LBS	60LBS
BASKET				
Load capacity	Lbs.	40	50	60
Volume	Cu.ft.	11.22	13.55	18.45
Diameter	Inches	33.46	37.80	43.31
Depth	Inche	22.50	20.87	21.65
Wash speed	rpm.	20/60	20/60	20/50
Extraction speed	rpm.	150/500	100/510	100/500
Loading door diameter	Inche	18.90	18.90	18.90
Noise	DB (A)	< 70	< 70	< 70
TANK				
Tank1	Gal.	33	33	45.60
Tank2	Gal.	33	33	45.60
CARTRIDGE FILTER				
Filter capacity	Gal.	2X18	2X18	3X18
Tubes quantity	Nr.	2	2	3
Cartridges quantity	Nr.	2X2=4	2X2=4	3X2=12
POWERS				
Installation power	kw.	7.5	9.0	13
Wash / extract	kw.	3.0	4.0	5.5
Pump	kw.	0.55	0.75	1.1
Fan	kw.	1.1	1.1	2.2
Refrigerator	kw.	3.8	3.8	5.8
CONNECTIONS				
Air	Ø	1/4"	1/4"	1/4"
Steam	Ø	1/2"	1/2"	1/2"
Water	Ø	3/4"	3/4"	3/4"
DIMENSIONS				
Width	Inche	70	82.5	84.65
Length	Inche	57.1	61.5	73.00
Height	Inche	81.9	82.3	86.61
WEIGHT				
Without solvent	Lbs.	2557	3307	3968

All technical data are subject to change without previous notice



"The Standard of Excellence in Dry Cleaning"

All Stainless Steel Constrution

Advanced Multi-Solvent Dry Cleaning Machine



The policy of UNISEC has always been production of the highest quality equipment at an extremely competitive price.

www.NYMUSA.com

For more detailed information, visit www.nymusa.com



NEW YORK MACHINERY

609 Chancellor Avenue, Irvington, NJ 07111
Tel: 973-375-1111 Fax: 973-375-0200
www.nymusa.com info@nymusa.com

UNISEC is the Best Dry Cleaning Machine in the world

Computer touch screen

All functions are easy to operate!
New feature!
Quick and easy way to remove Alarm!



Solvent Heater/Cooler

Most of all solvents can be functioned based upon the predetermined and controlled temperature.

Safety Redundancy

Our unique triple fire protection system prevents the risk of any fires making our machine one of the safest machines available.

Stainless Steel Construction

All components that come into contact with liquid solvent, solvent vapors, and contact water are constructed of high grade stainless steel. (Including tanks, piping, valves & drum housing)

Filtration System

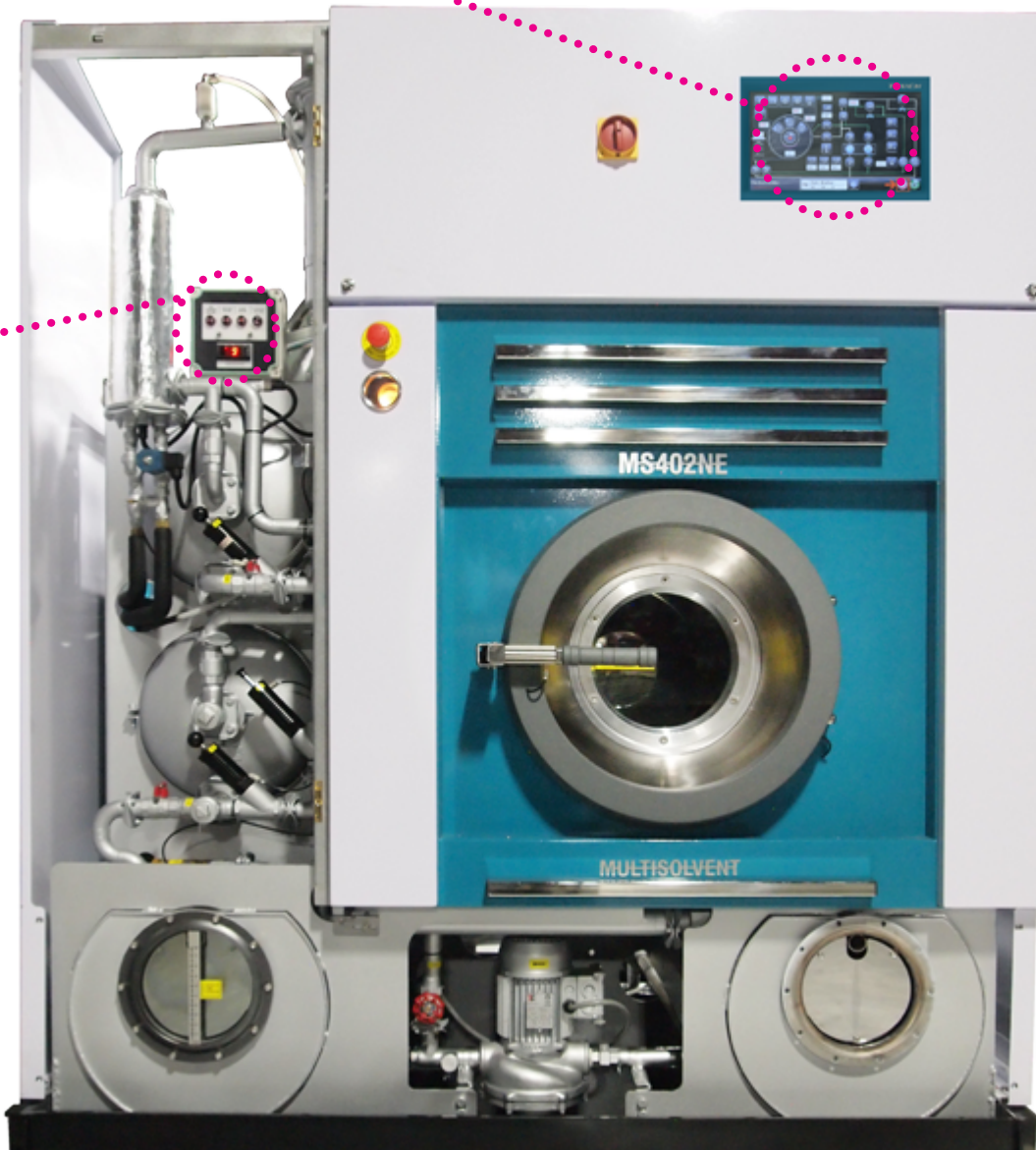
This system comes with two separate filter paths. One for dark loads and one for light loads, with a changeover valve.

This system allows for complete separation dark and light loads without any cross tank or filter contamination. Any jumbo cartridge filter may be used with this system, however for best results we recommend EM Technology.



Option available

Unisec Remote control : It is a system that allows you to control the machines through an app installed on a Smartphone, a tablet or a PC. The system also allows access to verify possible faults, modify programs, etc. Virtually allows almost total control from anywhere.



UNISEC

Perfect Combination of Technology and Experience

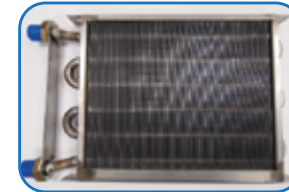
New Refrigeration system

Gauges can be checked on the touch screen.



Stainless Steam Coils

Unisec has upgraded Out copper steam coils 100% stainless steam coils . It was upgraded to prevent any cracks, dents, bruising, or even explosions from pressure buildup.



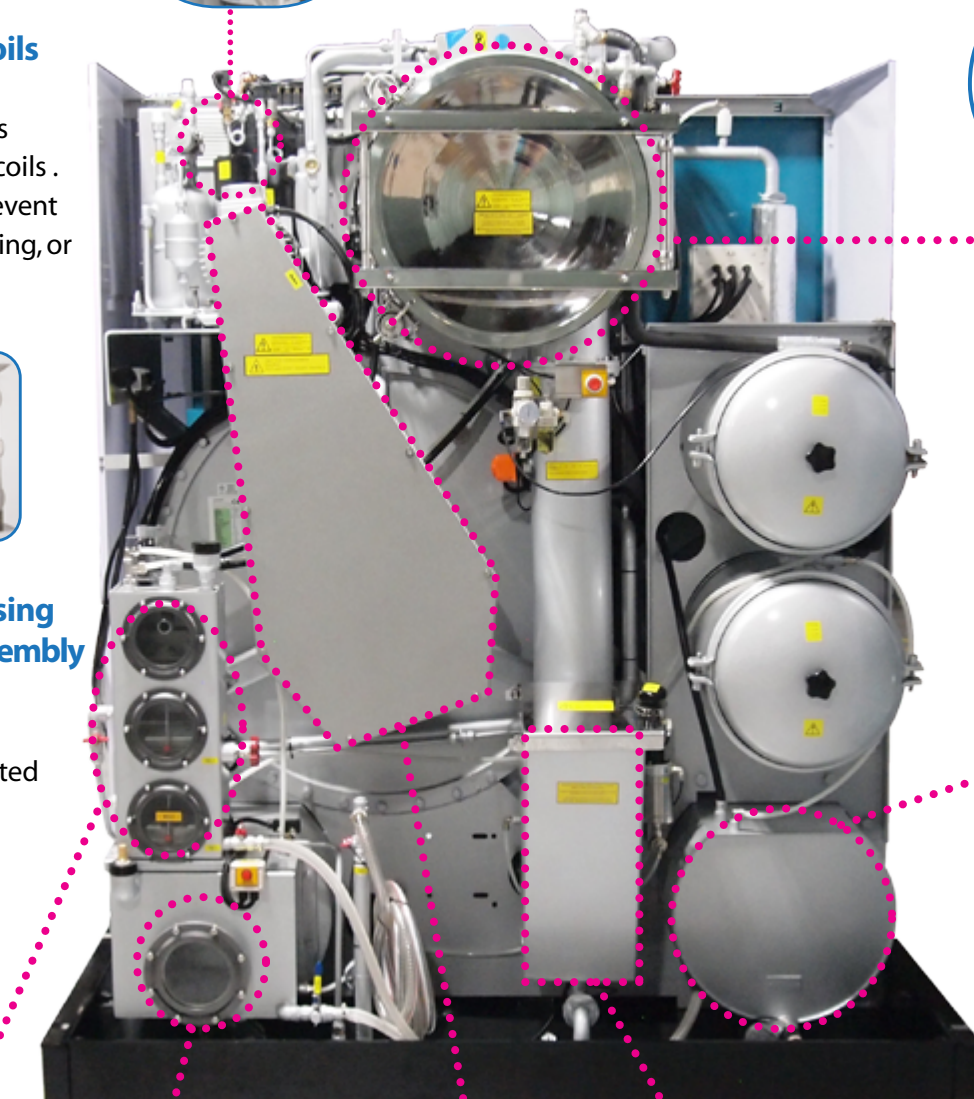
Steel Bearing Housing & Cross Bracket Assembly

Our bearing housing and cross bracket assembly are constructed of steel rather than cast iron to prevent cracking and provide smooth vibration-free extraction.

Two Stage Water Separator

Soap Tank with Automatic Injection

Low Vibration Drum and Shaft Assembly with Wide Belt Drive

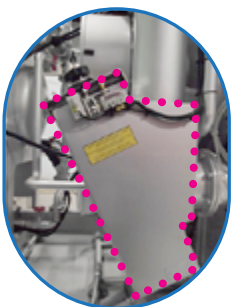


Oversized Round Stainless Steel Air Channel



Our unique round air channel reduces drying time and has no corners for lint to collect which can slow down drying time. It also allow for access to clean the coils without removing any freon lines or components.

Round Tank Easy care without lint buildup!



Button Trap

Inclined the button trap to make the solvent flow more smoothly.

No Distillation Required.

Best Results Obtained When Used with EM Technology.

Built with High Quality Parts for Long Service Life.

For more detailed technical information of Unisec, visit www.nymusa.com

WWW.NYMUSA.COM